

**BINGHAM COUNTY
RESOLUTION NO. 2023-05**

A RESOLUTION AUTHORIZING ACCEPTANCE OF 415 WEST PROGRESS ROAD IN
BINGHAM COUNTY, IDAHO

WHEREAS, The Bingham County Commissioners have the authority to accept and confirm the dedication of a road right-of-way to be open for public travel, (Idaho Code § 50-1313);

WHEREAS, The Record of Survey for the Blackfoot Charter Learning Center, was recorded in the Bingham County Clerk's Office as Instrument Number 740222 and is attached as Exhibit "A", along with a site plan map created by Jeff Freiberg Engineering; and

WHEREAS, The Bingham County Public Works Director has acknowledged that Bingham County Road Standards have been met and recommends that 415 W. Progress Road be accepted; and

THEREFORE BE IT HEREBY RESOLVED, at a Public Meeting held on January 4, 2023, the Board of County Commissioners of Bingham County, Idaho, in the interest of the public, accepted 415 West Progress Road and dedicated it as 415 West Progress Road.

SIGNED this 4th day of January 2023.



ATTEST:

Pamela W. Eckhardt
Bingham County Clerk

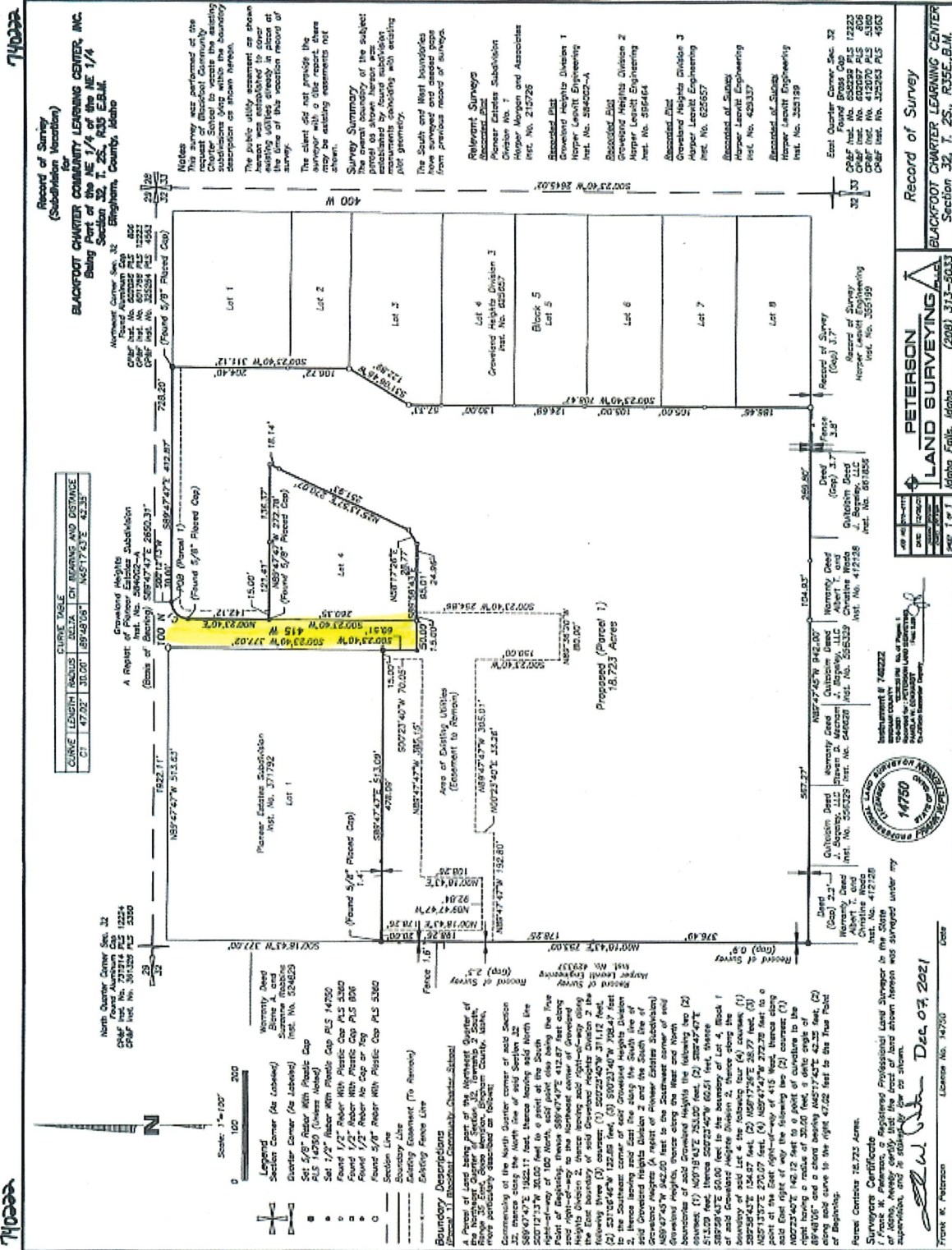
BINGHAM COUNTY COMMISSION

Whitney Manwaring, Chairman

Mark R. Bair, Commissioner

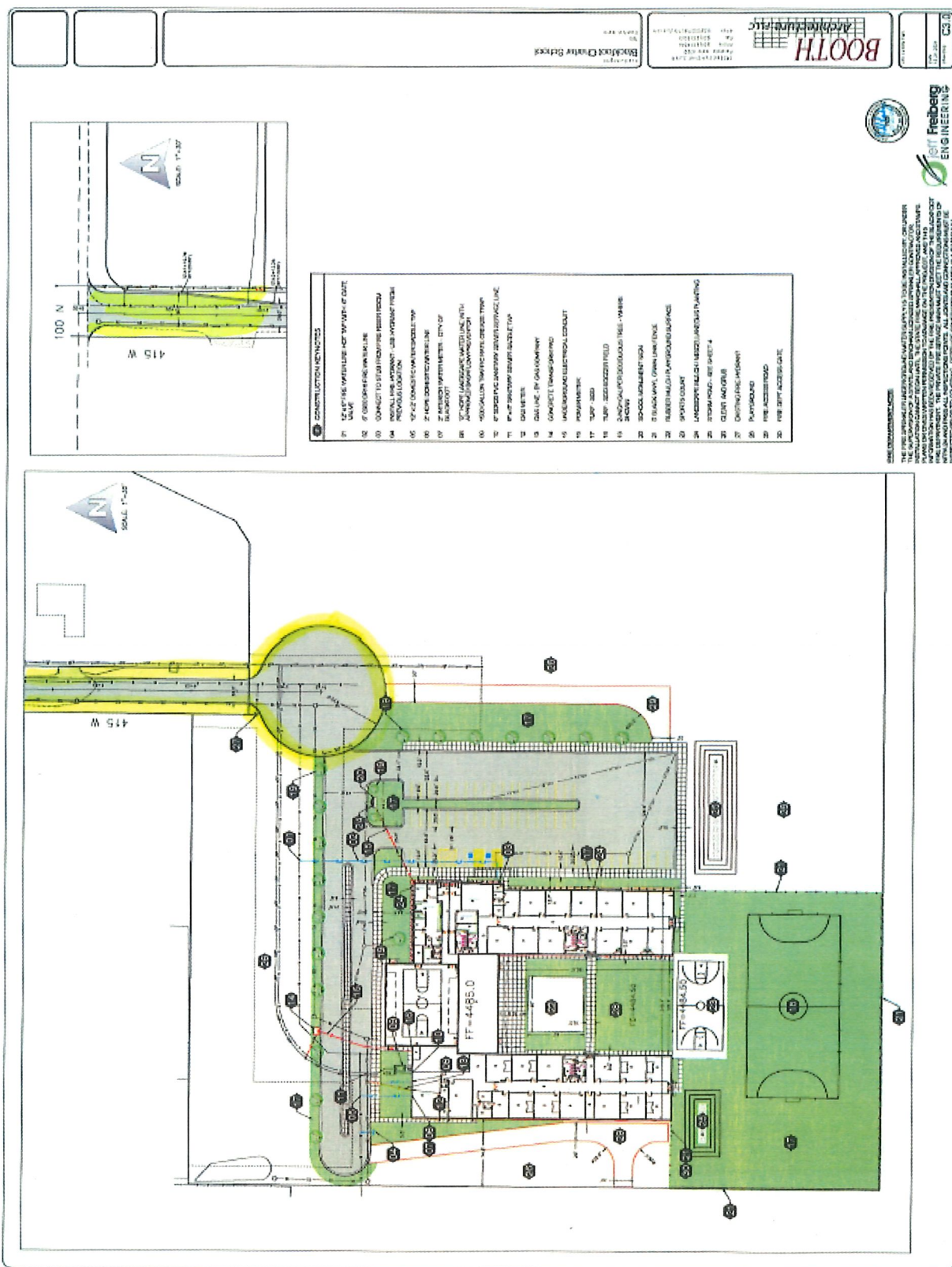
Jessica Lewis, Commissioner

"EXHIBIT A"



740222

740222



- COMPLETION NOTES**
- 01 LOCATE THE UTILITIES AND SPACES OF DATE VALUE
 - 02 6" CONCRETE FINE WET LIME
 - 03 CONDUCT TO STUDY AND REPAIR EXISTING
 - 04 NORMAL LINE ADJUNCT - JOB WORK FROM PREVIOUS LOCATION
 - 05 12" V-CORR CONCRETE WATER MAIN
 - 06 2" HDPE CONCRETE WATER LINE
 - 07 2" HDPE CONCRETE WATER LINE
 - 08 12" V-CORR CONCRETE WATER MAIN WITH 12" V-CORR CONCRETE WATER MAIN
 - 09 12" V-CORR CONCRETE WATER MAIN
 - 10 12" V-CORR CONCRETE WATER MAIN
 - 11 12" V-CORR CONCRETE WATER MAIN
 - 12 GAS MAIN
 - 13 GAS LINE IN GAS MAIN
 - 14 CONCRETE TRANSFORMER
 - 15 UNDERGROUND ELECTRICAL CABLE
 - 16 PERMANENT
 - 17 12" V-CORR
 - 18 12" V-CORR
 - 19 12" V-CORR
 - 20 12" V-CORR



THE ENGINEER HAS PREPARED THESE PLANS TO THE BEST OF HIS KNOWLEDGE AND BELIEVES THAT THEY COMPLY WITH ALL APPLICABLE REGULATIONS AND STANDARDS. THE ENGINEER HAS NOT CONDUCTED A VISUAL INSPECTION OF THE PROJECT AND HAS NOT BEEN ADVISED OF ANY CHANGES TO THE PROJECT SINCE THE DATE OF THE PREPARATION OF THESE PLANS. THE ENGINEER HAS NOT CONDUCTED A VISUAL INSPECTION OF THE PROJECT SINCE THE DATE OF THE PREPARATION OF THESE PLANS. THE ENGINEER HAS NOT CONDUCTED A VISUAL INSPECTION OF THE PROJECT SINCE THE DATE OF THE PREPARATION OF THESE PLANS.

BOOTH Architecture
 ARCHITECTS
 100 N. 10TH ST.
 SUITE 100
 ASTORIA, OR 97103
 PHONE: 503.325.1111
 FAX: 503.325.1112
 WWW.BOOTHTH.COM

Blacklock Creative Studios
 100 N. 10TH ST.
 SUITE 100
 ASTORIA, OR 97103
 PHONE: 503.325.1111
 FAX: 503.325.1112
 WWW.BLACKLOCKCREATIVE.COM